

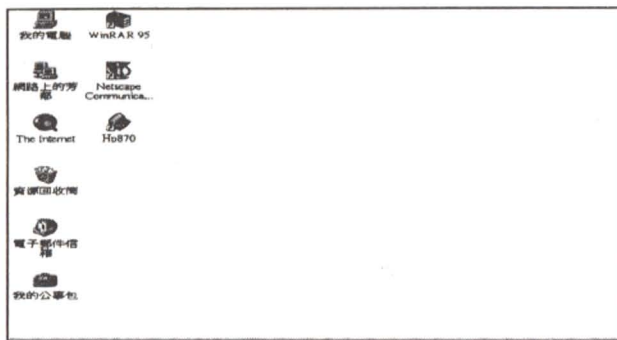
WIN95 連線光碟的辦法

參考組

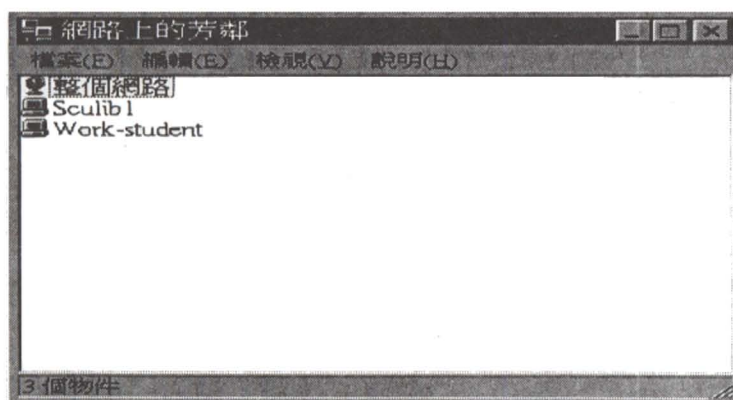
一、請連線至本館光碟網路伺服器(Sculib1)，安裝 Novell Netware Client32 網路通訊

安裝步驟如下：

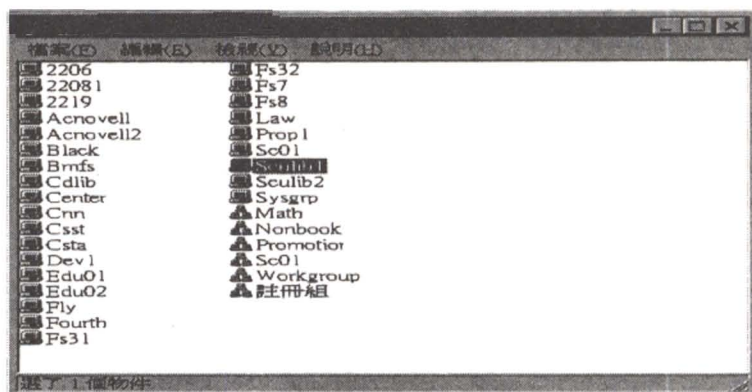
1. 於 WIN95 起始畫面選擇網路芳鄰



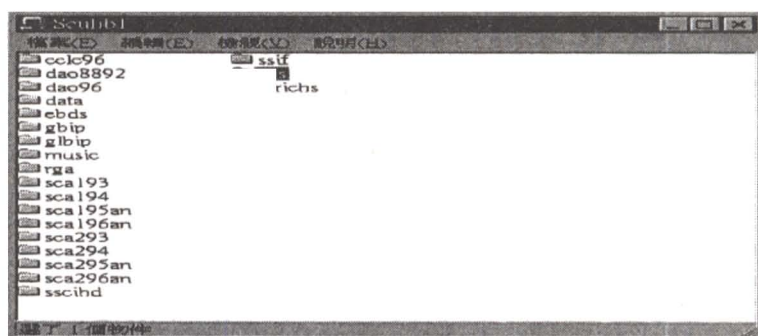
2. 選整個網路



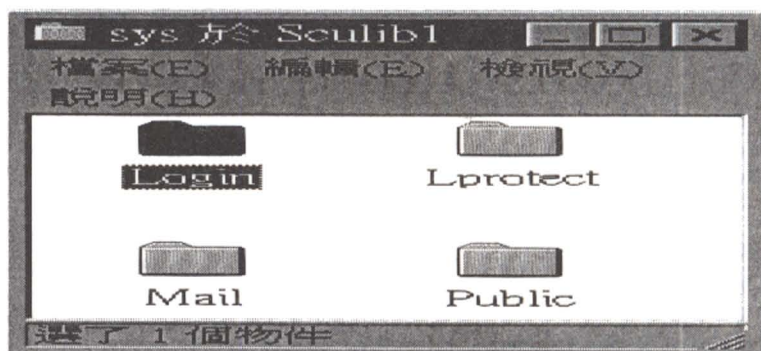
3. 選 Sculib1



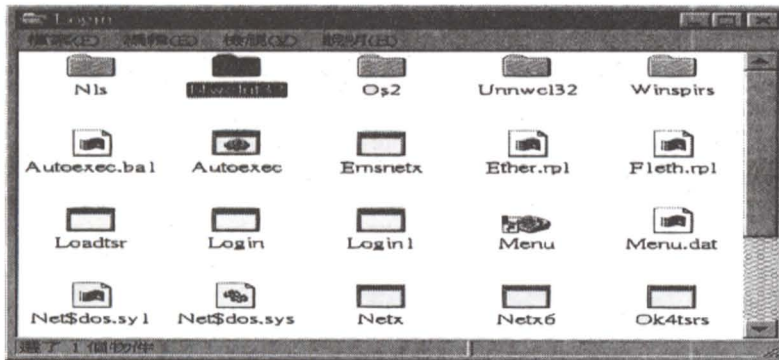
4. 選 sys



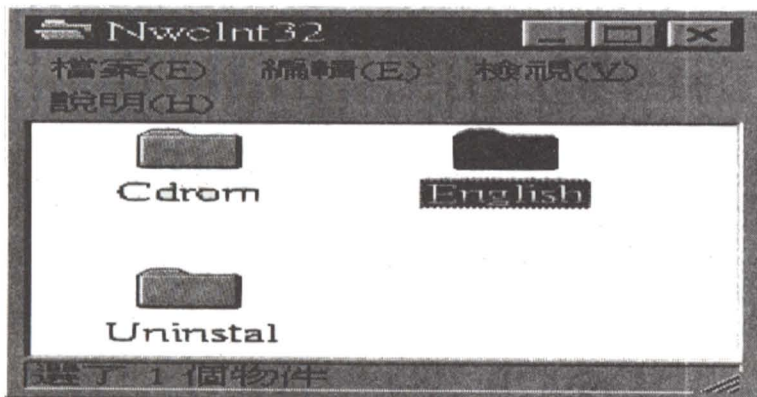
5. 選 Login



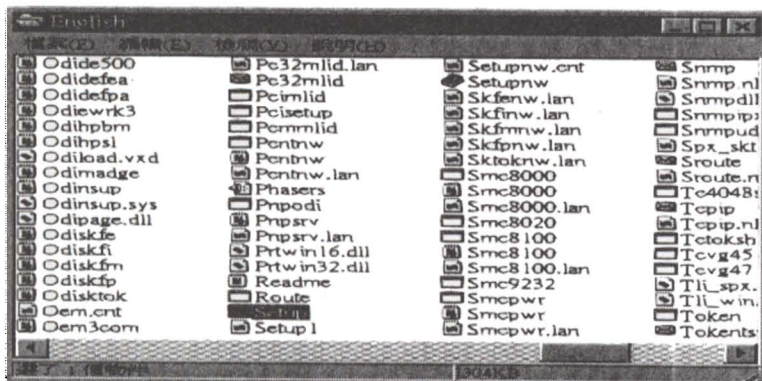
6. 選 NWCInt32



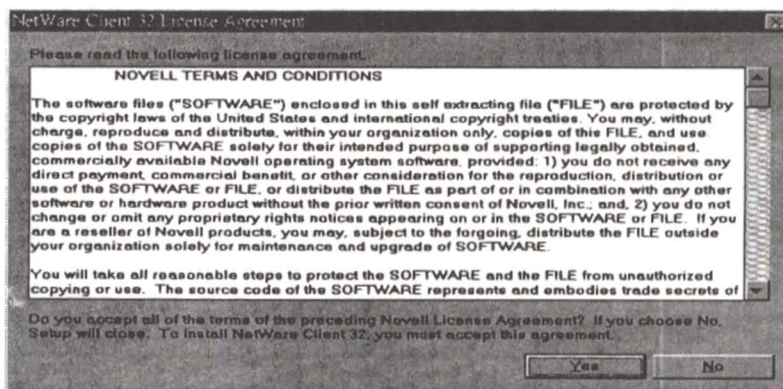
7. 選 English



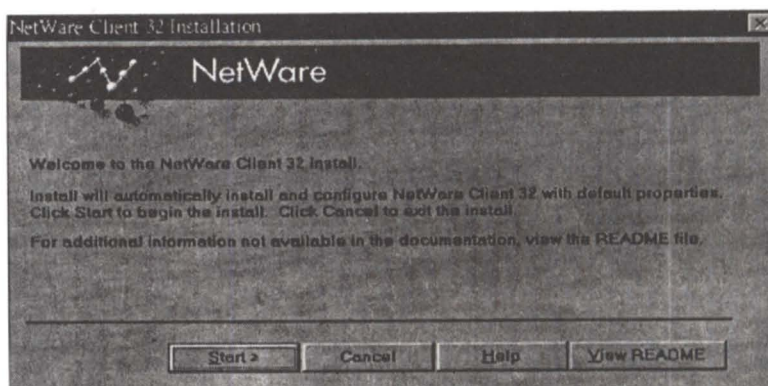
8. 直接執行 Setup



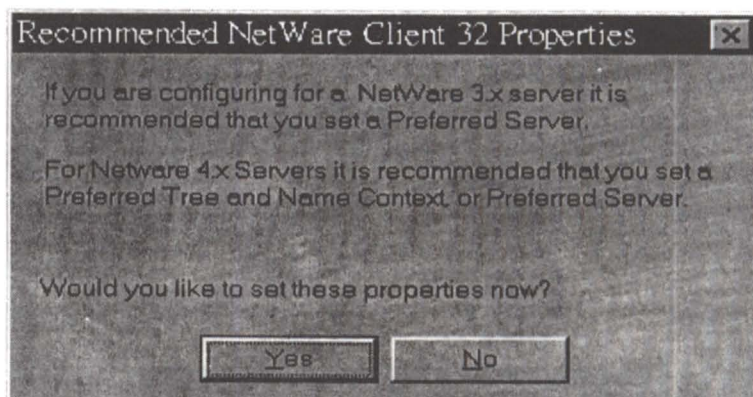
9. 按 YES



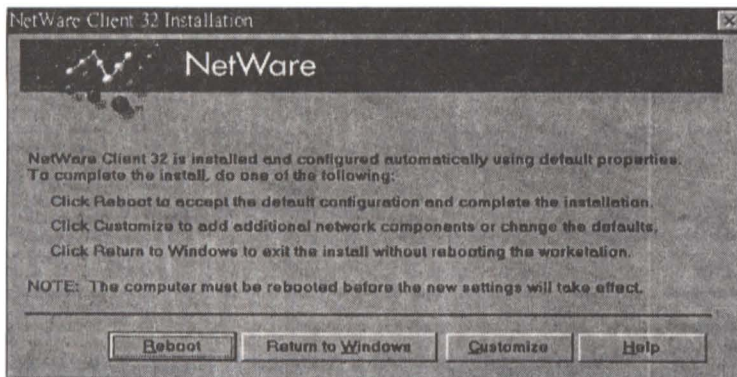
10. 接著選 START



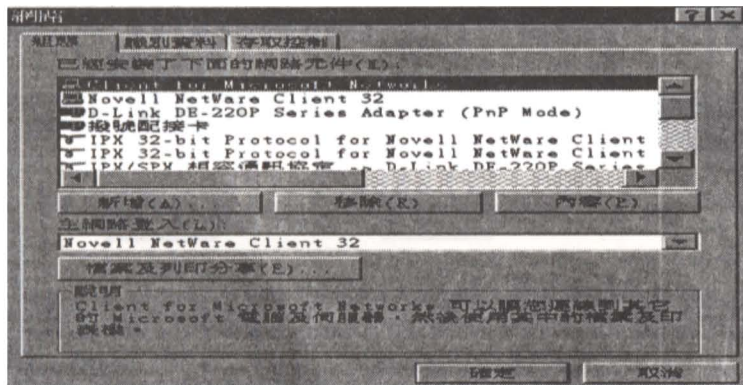
11. 系統出現此對話盒，請選 NO;若沒出現，則跳過



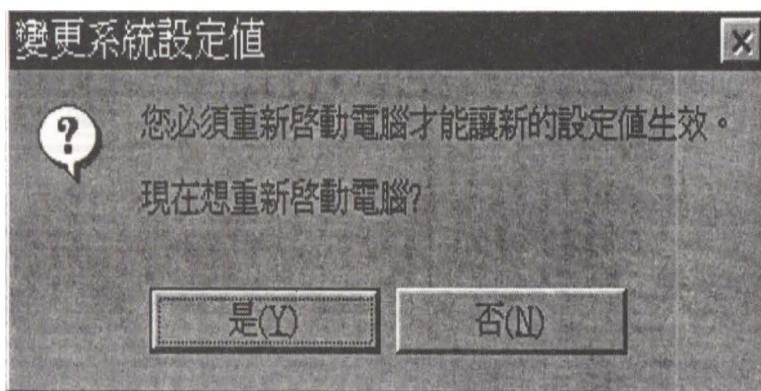
12. 接著選 Customize



13. 安裝完畢，系統出現”主網路登入”對話盒，請選”Client for Microsoft Networks”為您的主網路，按確定後離開



14. 重新起動電腦讓新的設定值生效。



二、請將 Login.exe 拷貝至您的目錄 Windows 中：

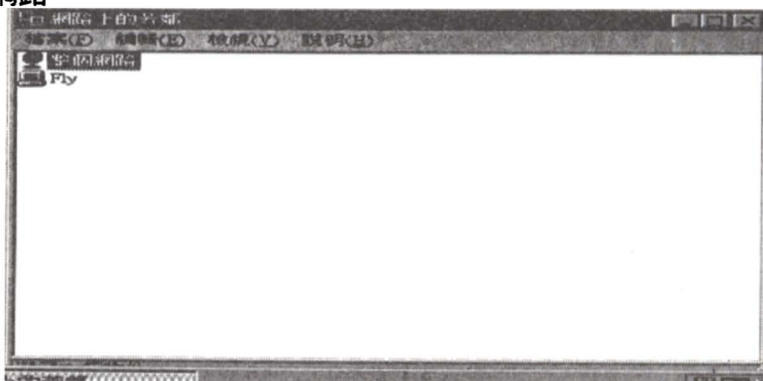
步驟如下：

同上(一)步驟，至本館光碟網路伺服器中的 Login 目錄下，Copy 執行程式 login.exe，步驟如下：

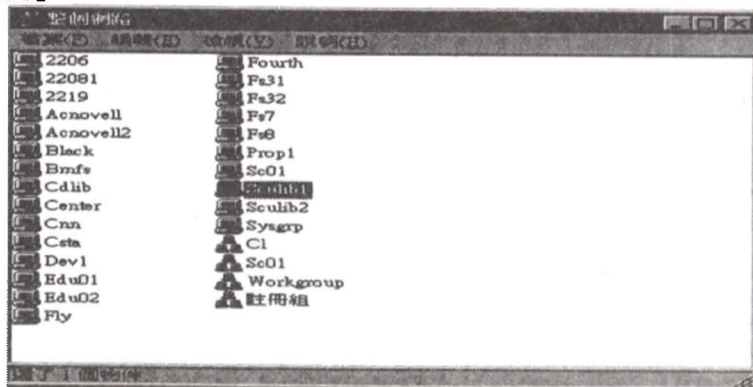
1. 於 win95 起始畫面，選擇網路芳鄰



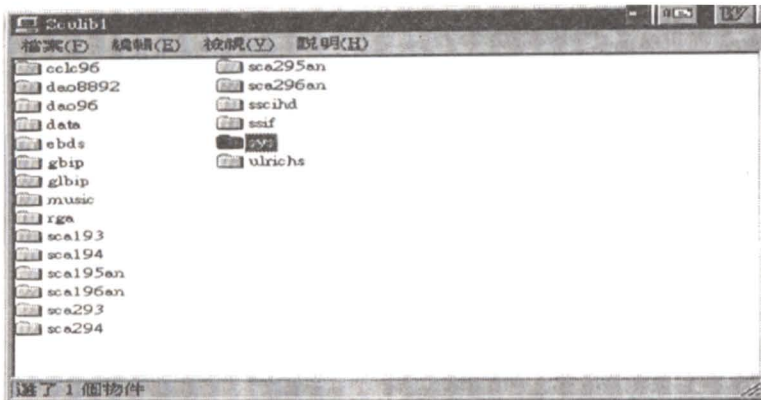
2. 選整個網路



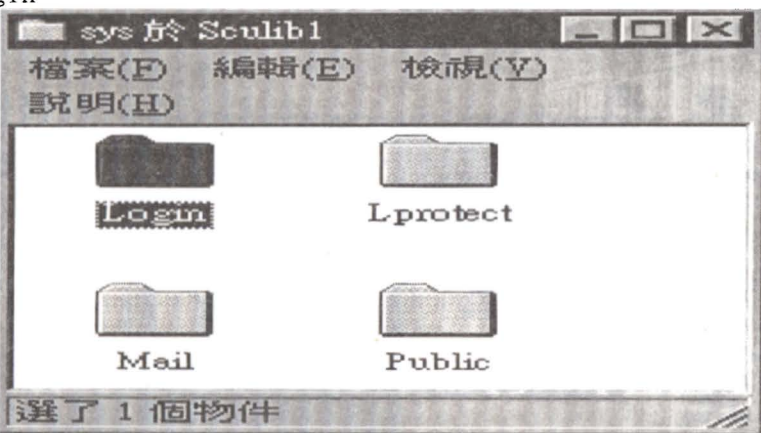
3. 選 Sculib1



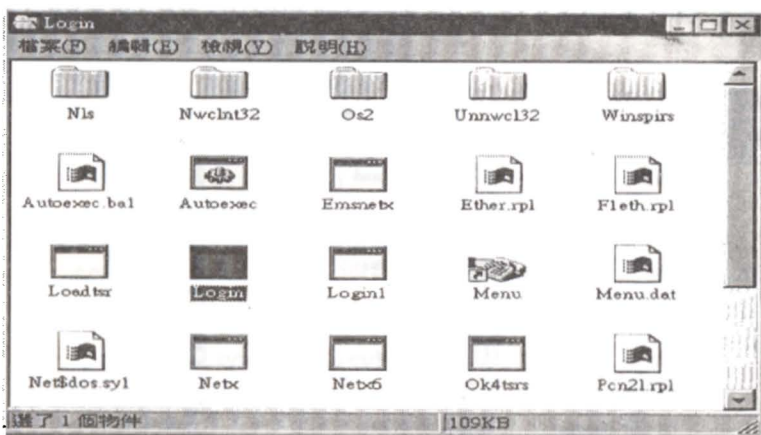
4. 選 SYS



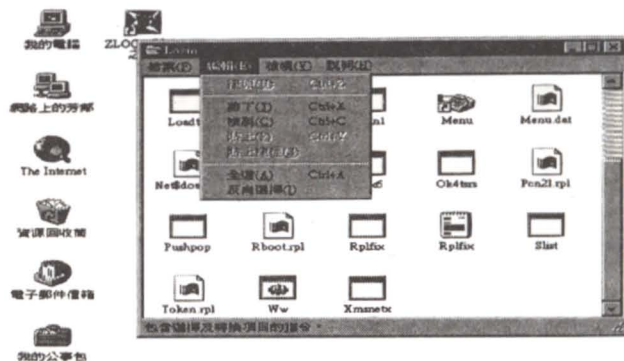
5. 選 Login



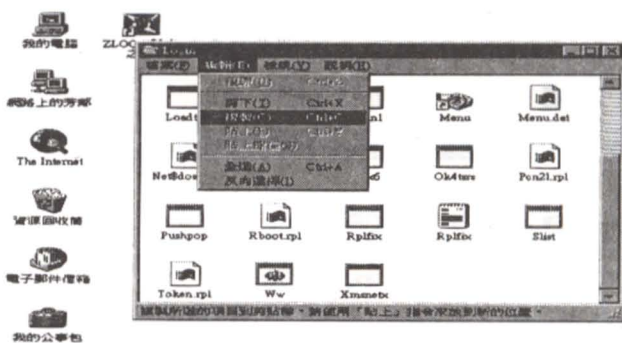
6. 選取 login.exe



7. 選編輯[E]



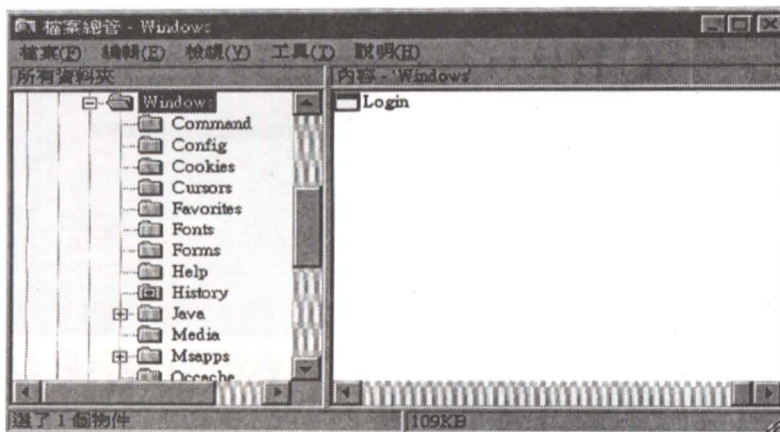
8. 選複製[C]



9. 回到您的 C: 下的 Windows 目錄下

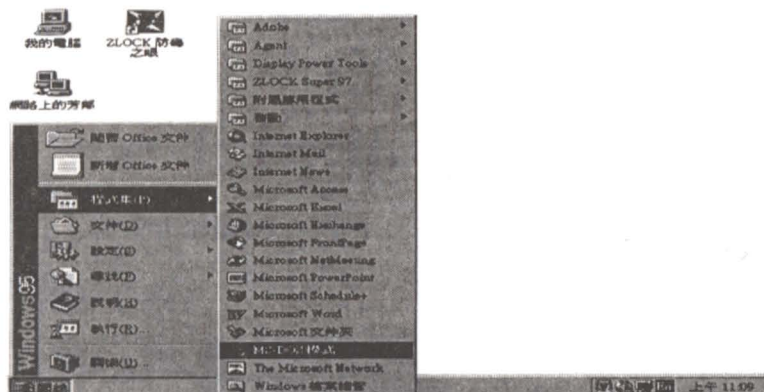


10. 選貼上[P]，將 login.exe 拷貝至 C:\Windows 目錄下



三、連線步驟：

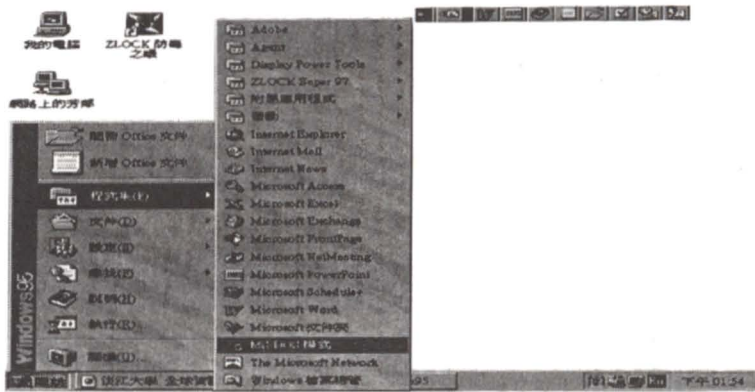
1. 於 Win95 起始畫面，選擇”開始”，選程式集，選 MS-DOS 模式



2. 系統切到 DOS 視窗(C:\WINDOWS>)
3. 鍵入 login sculib1/cdrom 即可連線至外雙溪校區圖書館光碟系統(城中分館請打 login cdlib/cdrom)
例:C:\WINDOWS>LOGIN SCULIB1/CDROM

四、 在桌面建立”查詢光碟網路”的捷徑，方便未來使用：

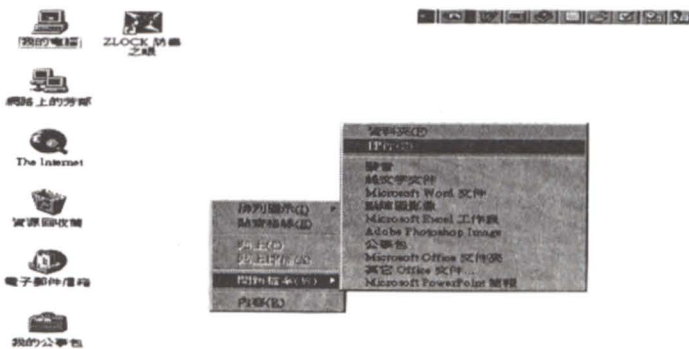
1. 於 Win95 起始畫面，選擇”開始”，選”程式集”中的”MS-DOS 模式”

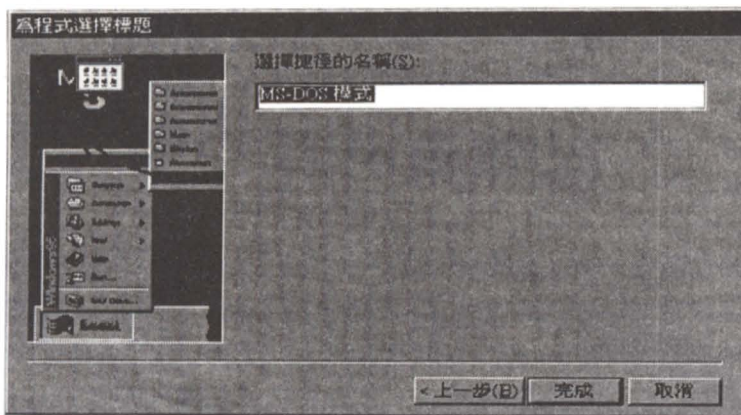


2. 用 edit 編輯”查詢網路光碟”的批次檔(cdrom.bat)為”login sculib1/cdrom”或”login cdlib/cdrom”

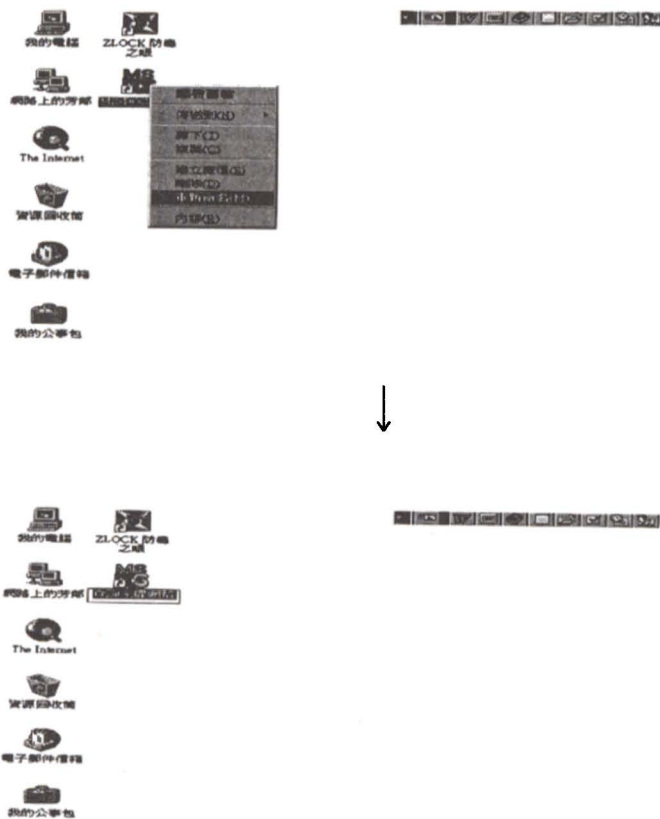
例:在 C:\WINDOWS>下打 edit ，則進入編輯畫面，打 login sculib1/cdrom 之後按存檔，檔名設為 cdrom.bat 即可。

3. 將”MS-DOS 模式”(command.com)在桌面建立捷徑





4. 將 MS-DOS 模式更名為”查詢光碟網路”



5. 如此以後只須按選”查詢光碟網路”圖示後，於 C:\WINDOWS>後鍵入 cdrom 即可連線上光碟網路。